

SEE MAP 23

SEE MAP 25

U. S. A. FOREST
1
634 AC

U. S. A. FOREST
1
639.7 AC

CHEWALLA LAKE

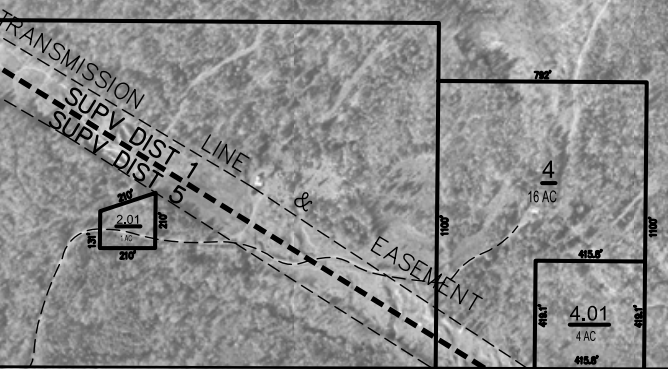
SCHOOL DIST 1

SCHOOL DIST 2

U. S. A. FOREST
1
634 AC

U. S. A. FOREST
1
640 AC

CHEWALLA CREEK



UPDATED AS OF 07-21-2005

THIS PROPERTY OWNERSHIP MAP IS FOR TAX PURPOSES ONLY. IT IS NOT INTENDED FOR CONVEYANCES NOR IS IT A LEGAL SURVEY. THIS MAP WAS PREPARED BY:

TRI-STATE CONSULTING SERVICES, INC.
P.O. BOX 1132
GALVESTON, MS 39204
207 COWWELL AVENUE
PELL CITY, AL 36765
3 CENTRAL PLAZA PHB 246
ROME, GEORGIA 30162

LEGEND

COUNTY LINE	---
CORPORATION LINE	----
TOWNSHIP, RANGE LINE	-----
SECTION LINE	-----
STATE LINE	-----
SUPERVISOR DISTRICT LINE	-----

PARCEL NUMBER	24
ACREAGE	2.4 AC
ACREAGE, CALCULATED	1.3 AC
SUBDIVISION LOT NUMBER	23
DIMENSION	187'

1/4 SECTION

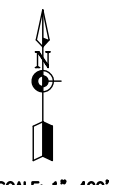
D	C	B	A
E	F	G	H
M	L	K	J
N	P	Q	R

TOWNSHIP LOCATOR

8	9	4	3	2	1
7	8	9	10	11	12
18	17	18	15	14	13
19	20	21	22	23	24
25	26	27	28	29	30
31	32	33	34	35	36

COUNTY LOCATOR

175	176	177	178
179	180	181	182
183	184	185	186
187	188	189	190



MARSHALL COUNTY, MISSISSIPPI
MAP 26

SECTION	17-18-19-20
TOWNSHIP	4S
RANGE	18W

DATE OF PHOTOGRAPHY: FEBRUARY, 2000

SCALE: 1"=400'