



THIS PROPERTY OWNERSHIP MAP IS FOR TAX PURPOSES ONLY. IT IS NOT INTENDED FOR CONVEYANCES NOR IS IT A LEGAL SURVEY. THIS MAP WAS PREPARED BY:

TRI-STATE CONSULTING SERVICES, INC.
 P.O. BOX 1122 307 OSBORN AVENUE 3 DIXON ROAD, BOX 248
 GULFBROOK, MS 39204 HELL CITY, AL 35125 ROME, GEORGIA 30162

LEGEND

COUNTY LINE ————
 CORPORATION LINE - - - - -
 TOWNSHIP, RANGE LINE ————
 SECTION LINE ————
 STATE LINE ————
 SUPERVISOR DISTRICT LINE - - - - -

PARCEL NUMBER 24
 ACREAGE 2.4 AC
 ACREAGE, CALCULATED 1.3 AC
 SUBDIVISION LOT NUMBER 89
 DIMENSION 44'

1/4 SECTION

D	C	B	A
E	F	G	H
M	L	K	J
N	P	Q	R

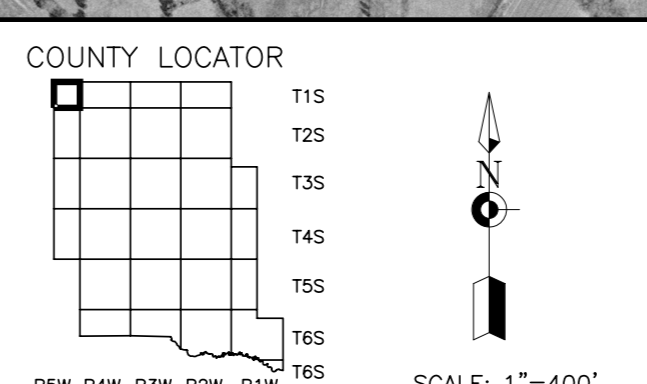
TOWNSHIP LOCATOR

8	5	4	3	2	1
7	6	9	10	11	12
16	17	14	15	14	15
26	25	27	28	33	34
36	35	28	27	36	35
31	23	23	24	25	36

COUNTY LOCATOR

115	115
125	125
135	135
145	145
155	155
165	165
175	175
185	185
195	195
205	205

HOW FAR FROM HOW FIVE



UPDATED AS OF 07-06-2006

MARSHALL COUNTY, MISSISSIPPI
MAP 248

SECTION 27-34
 TOWNSHIP 15
 RANGE SW
 DATE OF PHOTOGRAPHY: FEBRUARY, 2000